

# Business Intelligence Exchange

## OLAP & A Show Designing Highly Effective OLAP Solutions



# Contents

✓ BI Trends

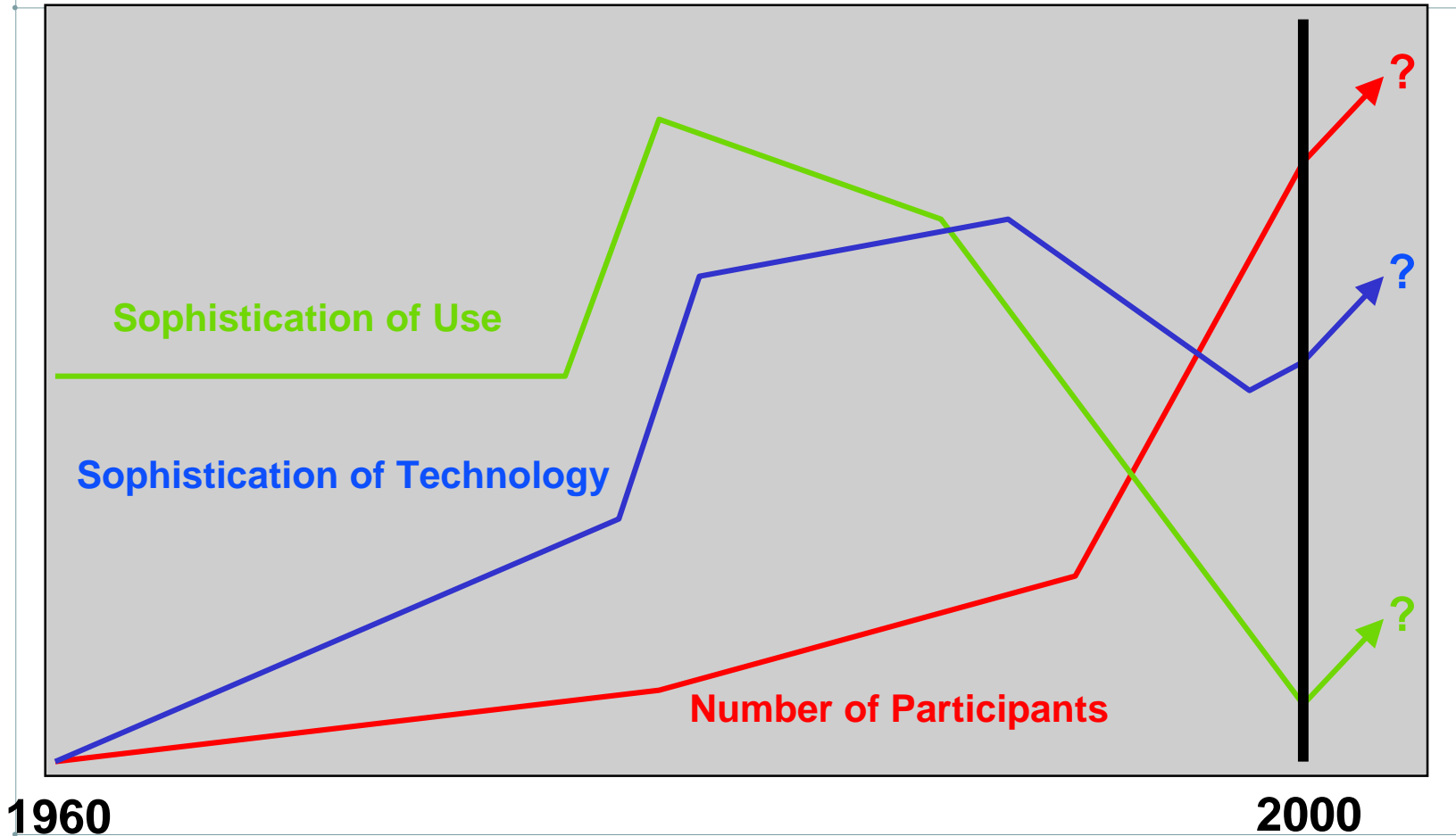
✓ Seven Habits

✓ Trivial Pursuit

✓ Characteristics of a Good Show

✓ Q&A

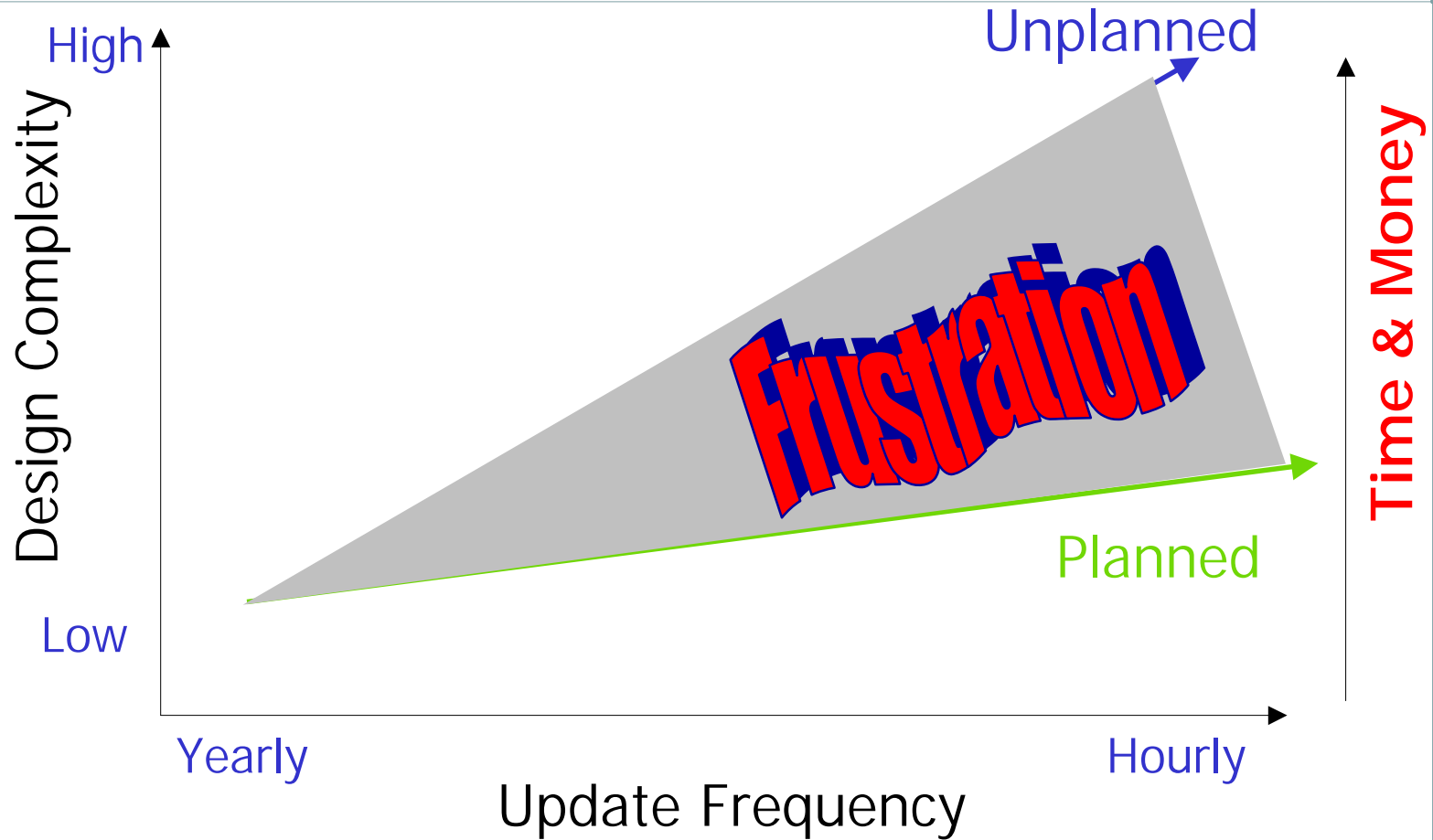
# Business Intelligence Trends



1960

2000

# Highly Effective OLAP Solutions



# Contents

✓ BI Trends

✓ Seven Habits

✓ Trivial Pursuit

✓ Characteristics of a Good Show

✓ Q&A

# Seven Habits for Designing Highly Effective OLAP Solutions

- Visualize
- Design with the end in mind
- First things first
- Focus on the Customers
- Listen first, then execute
- Collaborate
- Review, Analyze, Iterate



# Step-by-Step™ DW Development Lifecycle

## Establish the Program

1. Develop the Rationale
2. Target the Opportunities
3. Define the Architecture
4. Create the DW Program

## Prepare the Project

5. Plot the Project Tasks
6. Establish the Infrastructure
7. Procure the Tool Kit
8. Assemble the Team

## Initiate the Database

9. Investigate Consumer Needs
10. Triage the Source Elements
11. Model States and Dimensions
12. Design the Database
13. Acquire Source Data
14. Populate the Database

## Explore the Data

15. Iterate Base Table Design
16. Explore Consumer Usage Interactively
17. Tune Collection Design
18. Plan Cycles and Production Migration

## Implement the Deliverables

19. Prepare for Release
20. Train the Consumers
21. Initiate Support Processes
22. Migrate to Production

## Expand the Environment

23. Manage the DW Inventory
24. Synchronize with Evolving Business Needs
25. Evangelize Endlessly
26. Do it Again!

# Contents

- ✓ BI Trends
- ✓ Seven Habits
- ✓ Trivial Pursuit
- ✓ Characteristics of a Good Show
- ✓ Q&A





# Trivial Pursuit

Millions

RANK	MOVIE TITLES (1900-2001)	DOMESTIC	WORLD	Budget	Return on Investment	
					DOMESTIC	WORLD
1	Titanic (1997)	\$600.80	\$1,835.40	\$200	300%	918%
2	Star Wars: Episode I - The Phantom Menace (1999)	\$431.10	\$922.60	\$115	375%	802%
3	Jurassic Park (1993)	\$357.10	\$920.10	\$63	567%	1,460%
4	Independence Day (1996)	\$306.20	\$811.20	\$75	408%	1,082%
5	Star Wars (1977)	\$461.00	\$798.00	\$11	4,191%	7,255%
<b>124</b>	<b>Waterworld (1995)</b>	<b>\$88.20</b>	<b>\$255.20</b>	<b>\$175</b>	<b>50%</b>	<b>146%</b>
<b>137</b>	<b>Blair Witch Project, The (1999)</b>	<b>\$140.50</b>	<b>\$240.50</b>	<b>\$0</b>	<b>401,428,571%</b>	<b>687,142,857%</b>

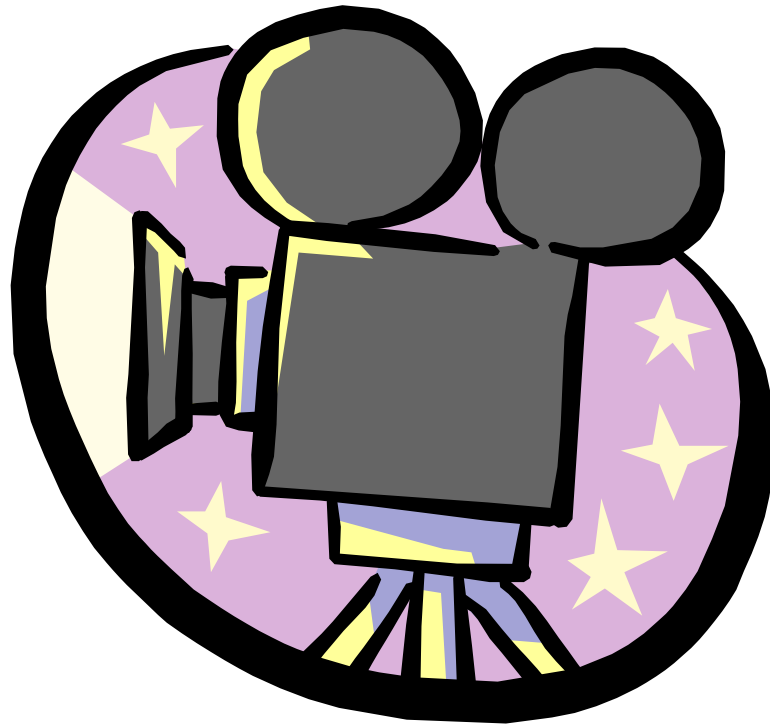
Source: *IMDB.com & WorldwideBoxOffice.com*

# Contents

- ✓ BI Trends
- ✓ Seven Habits
- ✓ Trivial Pursuit
- ✓ Characteristics of a Good Show
- ✓ Q&A

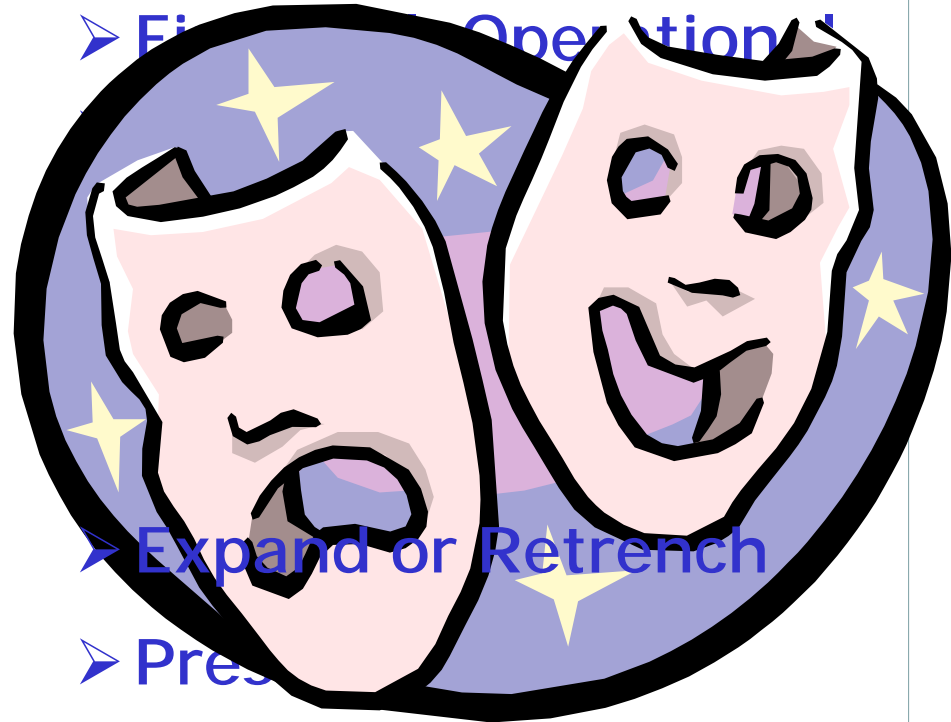
# What defines a good show?

- Actors?
- Directors?
- Editors?
- Producers?
- Story?
- Setting?
- Special Effects?
- Budget?



# Characteristics of a good **OLAP** Show

- PLOT
- SETTING
- CHARACTERS
- POINT OF VIEW
- SYMBOLISM
- THEME
- STYLE/VOICE



# PLOT

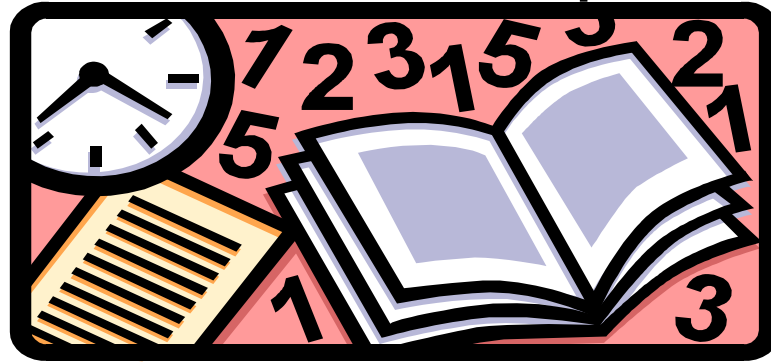
- What *exactly* happens in the presentation?
- Is there revelation, resolution, or both?



If conclusions are drawn, what recommendations made?

# SETTING

- What is the time period of the presentation?
- Does the setting make a difference, or could this story take place anytime, anywhere?
- How might a different time period affect the story?



Design around time.

# CHARACTERS

- What characters are multi-dimensional/dynamic?
- What characters are flat/static? Why?
- How is their character revealed (hierarchy, comments, member properties, etc.)?



Understand how your customers look at dimensions.



# POINT OF VIEW

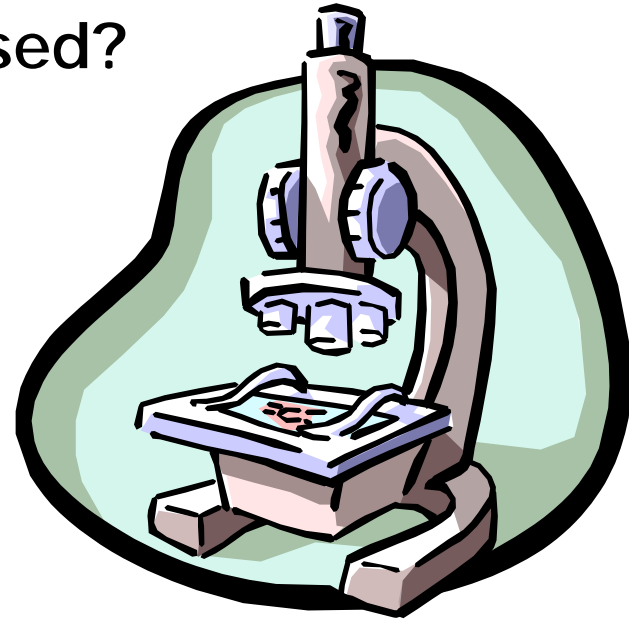
- Who tells the story?
- What about the narrator makes a difference in the story (participant/nonparticipant, function, character, limitations, etc.)?



Is there enough depth to satisfy the info consumer?

# SYMBOLISM

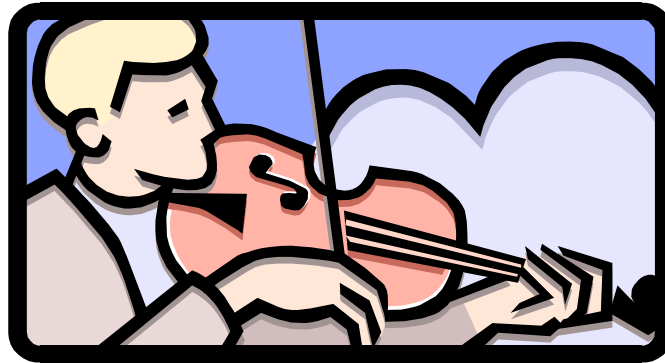
- What are the symbolic elements?
- How and why are they used?



What about icons, color schemes and tag lines?

# THEME

- What repetitions of words or details do you want people to find?
- What does the story say about the business? How loudly? How well?



To be or not to be subtle???

# STYLE/VOICE

- What presentation tools are you using?
- How does it impact the story?

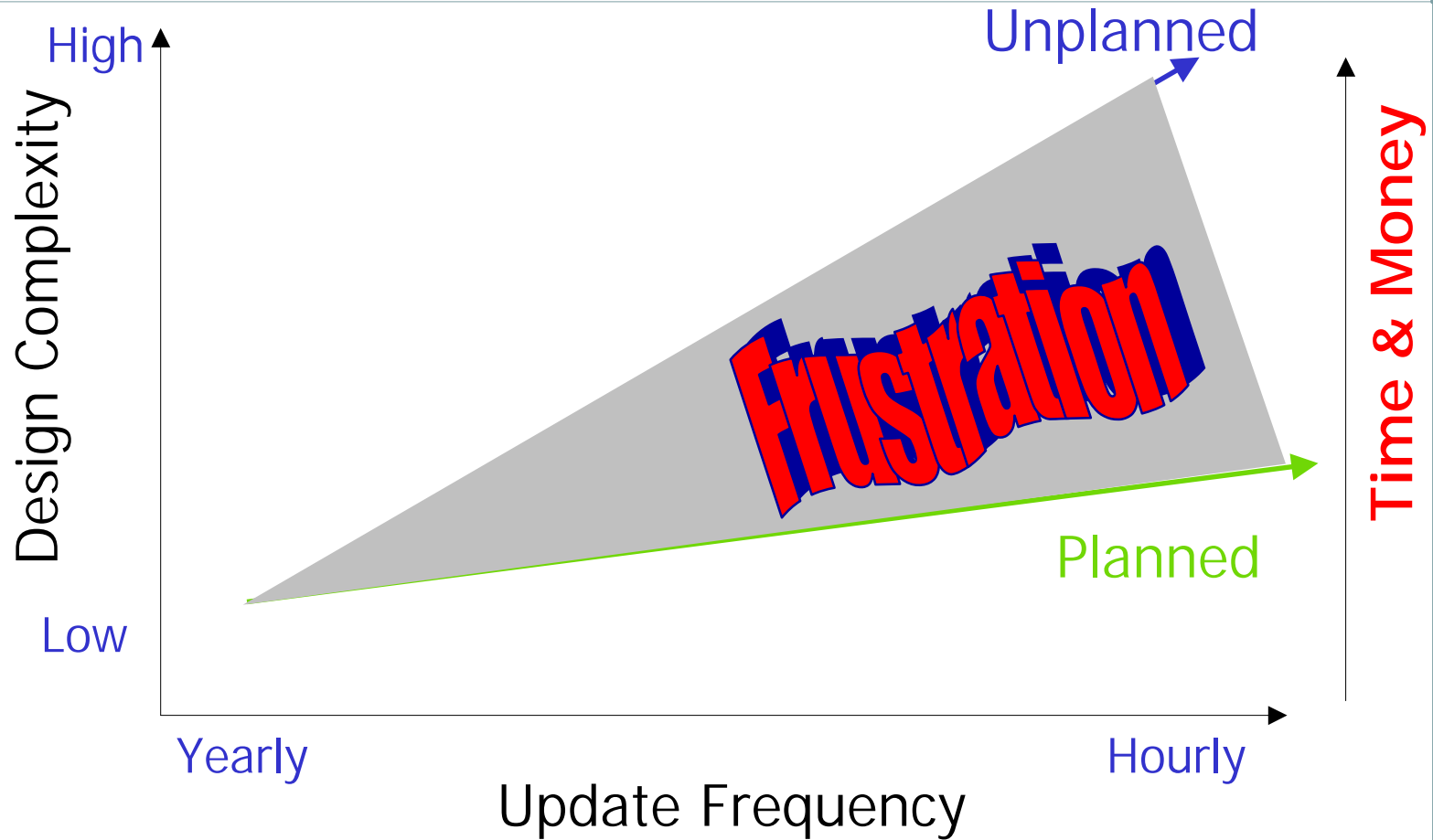


One size does not fit all!!!

# Back End vs. Front End



# Highly Effective OLAP Solutions



# Contents

- ✓ BI Trends
- ✓ Seven Habits
- ✓ Trivial Pursuit
- ✓ Characteristics of a Good Show
- ✓ Q&A





# End of Presentation

